

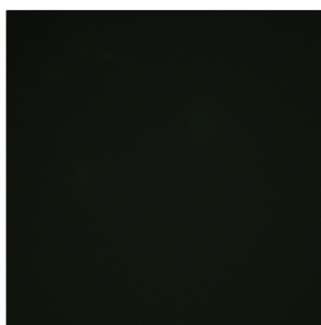
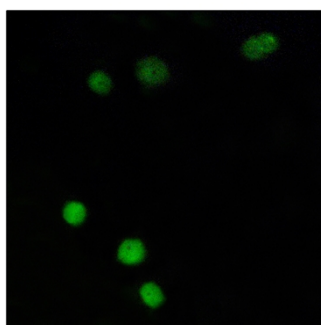


# TP53INP2 Polyclonal Antibody

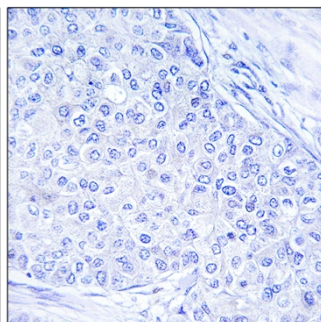
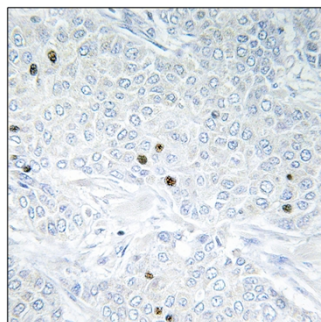
<b>Catalog No</b>	YP-Ab-00536
<b>Isotype</b>	IgG
<b>Reactivity</b>	Human;Mouse;Rat
<b>Applications</b>	WB;IHC;IF;ELISA
<b>Gene Name</b>	TP53INP2
<b>Protein Name</b>	Tumor protein p53-inducible nuclear protein 2
<b>Immunogen</b>	The antiserum was produced against synthesized peptide derived from human TP53INP2. AA range:1-50
<b>Specificity</b>	TP53INP2 Polyclonal Antibody detects endogenous levels of TP53INP2 protein.
<b>Formulation</b>	Liquid in PBS containing 50% glycerol, 0.5% BSA and 0.02% sodium azide.
<b>Source</b>	Polyclonal, Rabbit,IgG
<b>Purification</b>	The antibody was affinity-purified from rabbit antiserum by affinity-chromatography using epitope-specific immunogen.
<b>Dilution</b>	Immunohistochemistry: 1/100 - 1/300. Immunofluorescence: 1/200 - 1/1000. ELISA: 1/10000. Not yet tested in other applications.
<b>Concentration</b>	1 mg/ml
<b>Purity</b>	≥90%
<b>Storage Stability</b>	-20°C/1 year
<b>Synonyms</b>	TP53INP2; C20orf110; DOR; PINH; Tumor protein p53-inducible nuclear protein 2; Diabetes and obesity-regulated gene; p53-inducible protein U; PIG-U
<b>Observed Band</b>	17kD
<b>Cell Pathway</b>	Cytoplasm, cytosol. Nucleus. Nucleus, PML body. Cytoplasmic vesicle, autophagosome. Shuttles between the nucleus and the cytoplasm, depending on cellular stress conditions, and re-localizes to autophagosomes on autophagy activation.
<b>Tissue Specificity</b>	Eye,Heart,
<b>Function</b>	
<b>Background</b>	tumor protein p53 inducible nuclear protein 2(TP53INP2) Homo sapiens The protein encoded by this gene promotes autophagy and is essential for proper autophagosome formation and processing. In addition, the encoded protein can enhance rDNA transcription by helping in the assembly of the POLR1/RNA polymerase I preinitiation complex. Finally, this protein serves as a transcriptional activator for some genes. [provided by RefSeq, Jul 2016],
<b>matters needing attention</b>	Avoid repeated freezing and thawing!

**Usage suggestions**

This product can be used in immunological reaction related experiments. For more information, please consult technical personnel.

**Products Images**

Immunofluorescence analysis of MCF7 cells, using TP53INP2 Antibody. The picture on the right is blocked with the synthesized peptide.



Immunohistochemistry analysis of paraffin-embedded human breast carcinoma tissue, using TP53INP2 Antibody. The picture on the right is blocked with the synthesized peptide.